

# Table of Contents

<b><u>Multicast Quick–Start Configuration Guide</u></b> .....	<b>1</b>
<u>Introduction</u> .....	1
<u>Prerequisites</u> .....	1
<u>Requirements</u> .....	1
<u>Components Used</u> .....	1
<u>Conventions</u> .....	1
<u>Dense Mode</u> .....	2
<u>Sparse Mode with one RP</u> .....	2
<u>Sparse Mode with Multiple RPs</u> .....	3
<u>Auto–RP with one RP</u> .....	5
<u>Auto–RP with multiple RPs</u> .....	6
<u>DVMRP</u> .....	7
<u>MBGP</u> .....	8
<u>MSDP</u> .....	9
<u>Stub Multicast Routing</u> .....	10
<u>IGMP UDLR for Satellite Links</u> .....	11
<u>PIMv2 BSR</u> .....	12
<u>CGMP</u> .....	13
<u>IGMP Snooping</u> .....	13
<u>PGM</u> .....	14
<u>MRM</u> .....	14
<u>Troubleshooting</u> .....	15
<u>Related Information</u> .....	16

# Multicast Quick–Start Configuration Guide

---

## **Introduction**

## **Prerequisites**

Requirements

Components Used

Conventions

## **Dense Mode**

## **Sparse Mode with one RP**

## **Sparse Mode with Multiple RPs**

## **Auto–RP with one RP**

## **Auto–RP with multiple RPs**

## **DVMRP**

## **MBGP**

## **MSDP**

## **Stub Multicast Routing**

## **IGMP UDLR for Satellite Links**

## **PIMv2 BSR**

## **CGMP**

## **IGMP Snooping**

## **PGM**

## **MRM**

## **Troubleshooting**

## **Related Information**

---

## **Introduction**

IP multicasting is a bandwidth–conserving technology that reduces traffic by simultaneously delivering a single stream of information to thousands of corporate recipients and homes. Applications that take advantage of multicast include video conferencing, corporate communications, distance learning, and distribution of software, stock quotes, and news. This document discusses the basics of configuring multicast for various networking scenarios.

## **Prerequisites**

### **Requirements**

There are no specific requirements for this document.

### **Components Used**

This document is not restricted to specific software and hardware versions.

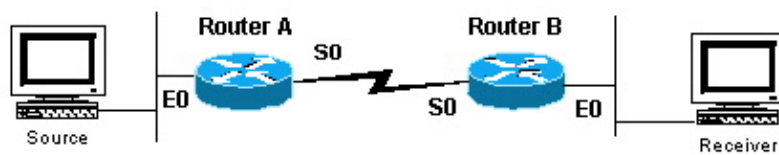
### **Conventions**

For more information on document conventions, refer to the Cisco Technical Tips Conventions.

## Dense Mode

Cisco recommends that you use Protocol Independent Multicast (PIM) sparse mode, particularly Auto-RP, where possible, especially for new deployments. However, if dense mode is desired, configure the global command **ip multicast-routing** and the interface command **ip pim sparse-dense-mode** on each interface that needs to process multicast traffic. The common requirement, for all configurations within this document, is to configure multicasting globally and configure PIM on the interfaces. As of Cisco IOS® Software Release 11.1, you can configure the interface commands **ip pim dense-mode** and **ip pim sparse-mode** simultaneously with the **ip pim sparse-dense-mode** command. In this mode, the interface is treated as dense-mode if the group is in dense-mode. If the group is in sparse-mode (for example, if an RP is known), the interface is treated as sparse-mode.

**Note:** The "Source" in the examples throughout this document represents the source of multicast traffic, and "Receiver" represents the receiver of multicast traffic.



### Router A Configuration

```
ip multicast-routing

interface ethernet0
ip address <address> <mask>
ip pim sparse-dense-mode

interface serial0
ip address <address> <mask>
ip pim sparse-dense-mode
```

### Router B Configuration

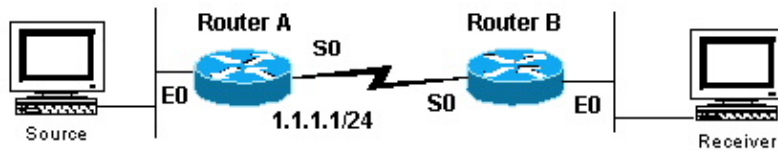
```
ip multicast-routing

interface serial0
ip address <address> <mask>
ip pim sparse-dense-mode

interface ethernet0
ip address <address> <mask>
ip pim sparse-dense-mode
```

## Sparse Mode with one RP

In this example, Router A is the RP which should typically be the closest router to the source. Static RP configuration requires that all routers in the PIM domain have the same **ip pim rp-address** commands configured. You can configure multiple RPs, but there can only be one RP per specific group.



### Router A Configuration

```
ip multicast-routing
ip pim rp-address 1.1.1.1

interface ethernet0
ip address <address> <mask>
ip pim sparse-dense-mode

interface serial0
ip address 1.1.1.1 255.255.255.0
ip pim sparse-dense-mode
```

### Router B Configuration

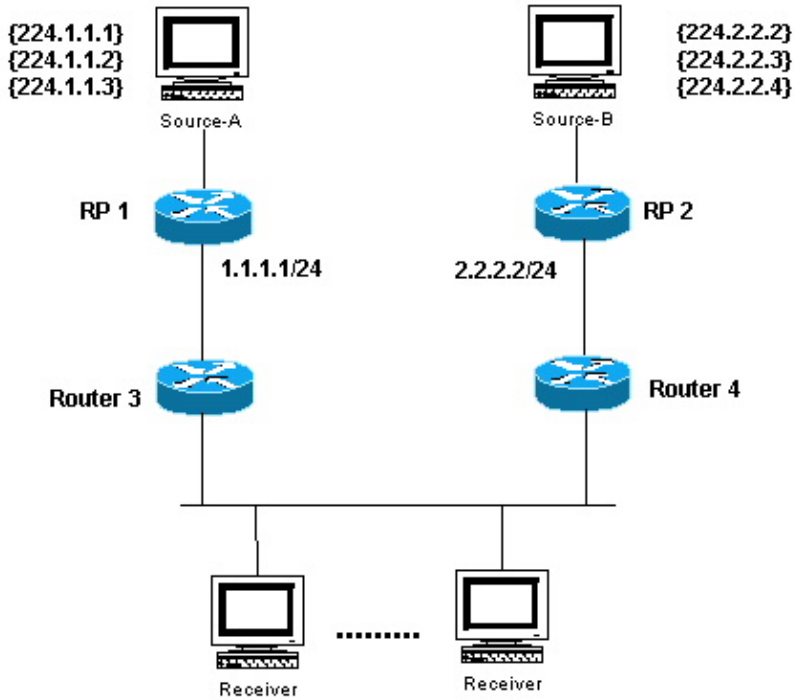
```
ip multicast-routing
ip pim rp-address 1.1.1.1

interface serial0
ip address <address> <mask>
ip pim sparse-dense-mode

interface ethernet0
ip address <address> <mask>
ip pim sparse-dense-mode
```

## Sparse Mode with Multiple RPs

In this example, Source-A is sending to 224.1.1.1, 224.1.1.2, and 224.1.1.3. Source-B is sending to 224.2.2.2, 224.2.2.3, and 224.2.2.4. You could have one router, either RP 1 or RP 2, be the RP for all groups, but if you want different RPs to handle different groups, you need to configure all routers to include which groups the RPs will serve. This type of static RP configuration requires that all routers in the PIM domain have the same **ip pim rp-address address acl** commands configured. You can also use Auto-RP to achieve the same setup, which is easier to configure.



#### RP 1 Configuration

```
ip multicast-routing

ip pim RP-address 1.1.1.1 2
ip pim RP-address 2.2.2.2 3

access-list 2 permit 224.1.1.1
access-list 2 permit 224.1.1.2
access-list 2 permit 224.1.1.3
access-list 3 permit 224.2.2.2
access-list 3 permit 224.2.2.3
access-list 3 permit 224.2.2.4
```

#### RP 2 Configuration

```
ip multicast-routing

ip pim RP-address 1.1.1.1 2
ip pim RP-address 2.2.2.2 3

access-list 2 permit 224.1.1.1
access-list 2 permit 224.1.1.2
access-list 2 permit 224.1.1.3
access-list 3 permit 224.2.2.2
access-list 3 permit 224.2.2.3
access-list 3 permit 224.2.2.4
```

#### Configuration for Routers 3 and 4

```
ip multicast-routing
ip pim RP-address 1.1.1.1 2
ip pim RP-address 2.2.2.2 3

access-list 2 permit 224.1.1.1
```

```

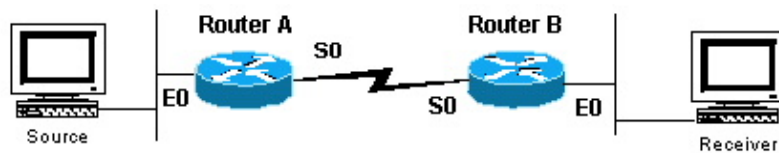
access-list 2 permit 224.1.1.2
access-list 2 permit 224.1.1.3
access-list 3 permit 224.2.2.2
access-list 3 permit 224.2.2.3
access-list 3 permit 224.2.2.4

```

## Auto-RP with one RP

Auto-RP requires that you configure the RPs to announce their availability as RPs and mapping agents. The RPs send their announcements using 224.0.1.39. The RP mapping agent listens to the announced packets from the RPs, then sends RP-to-group mappings in a discovery message that is sent to 224.0.1.40. These discovery messages are used by the remaining routers for their RP-to-group map. You can use one RP that also serves as the mapping agent, or you can configure multiple RPs and multiple mapping agents for redundancy purposes.

Note that when you choose an interface from which to source RP announcements, Cisco recommends that you use an interface such as a loopback instead of a physical interface. If you choose a physical interface, you are relying on that interface to always be up, which may not always be the case, and the router stops advertising itself as the RP once the physical interface goes down. With a loopback interface, however, it is always up and never goes down—ensuring the RP continues to advertise itself through any available interfaces as an RP, even if one or more of its physical interfaces fails. The loopback interface must be PIM enabled and advertised via an Interior Gateway Protocol (IGP) or it must be reachable using static routing.



### Router A Configuration

```

ip multicast-routing

ip pim send-rp-announce loopback0 scope 16
ip pim send-rp-discovery scope 16

interface loopback0
ip address <address> <mask>
ip pim sparse-dense-mode

interface ethernet0
ip address <address> <mask>
ip pim sparse-dense-mode

interface serial0
ip address <address> <mask>
ip pim sparse-dense-mode

```

### Router B Configuration

```

ip multicast-routing

interface ethernet0
ip address <address> <mask>
ip pim sparse-dense-mode

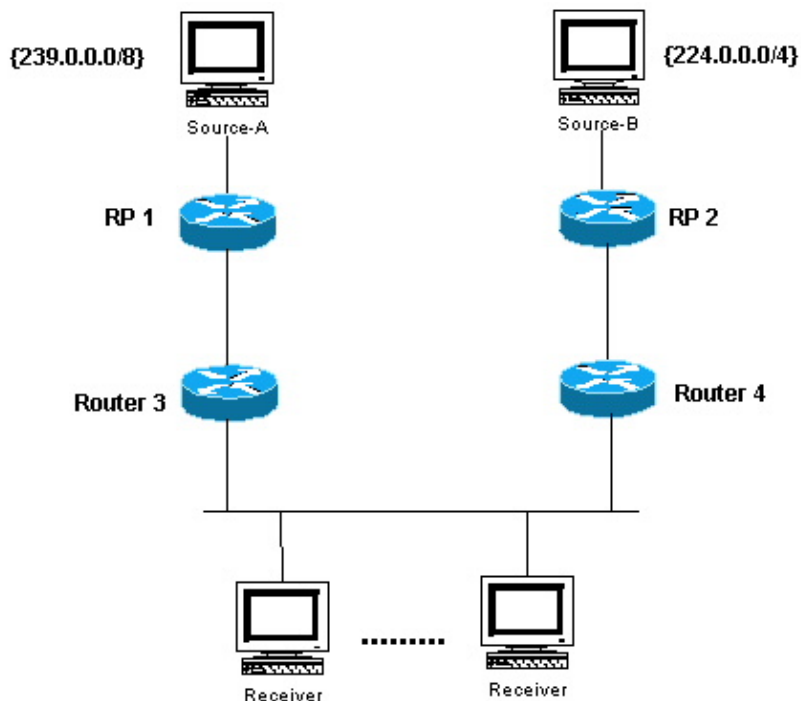
```

```
interface serial0
ip address <address> <mask>
ip pim sparse-dense-mode
```

## Auto-RP with multiple RPs

The access lists in this example allow the RPs to be an RP only for the groups you want. If no access list is configured, the RPs are available as an RP for all groups. If two RPs are announcing their availability to be RPs for the same group(s), the mapping agent(s) resolve these conflicts using "the highest IP address wins" rule.

To influence which router is the RP for a particular group, when two RPs are announcing for that group, you can configure each router with a loopback address. Place the higher IP address on the preferred RP, then use the loopback interface as the source of the announce packets; for example, **ip pim send-RP-announce loopback0**. When multiple mapping agents are used, they each advertise the same group to RP mappings to the 224.0.1.40 discovery group.



### RP 1 Configuration

```
ip multicast-routing

interface loopback0
ip address <address> <mask>
ip pim sparse-dense-mode

ip pim send-RP-announce loopback0 scope 16 group-list 1
ip pim send-RP-discovery scope 16

access-list 1 permit 239.0.0.0 0.255.255.255
```

### RP 2 Configuration

```

ip multicast-routing

interface loopback0
ip address <address> <mask>
ip pim sparse-dense-mode

ip pim send-RP-announce loopback0 scope 16 group-list 1
ip pim send-RP-discovery scope 16

access-list 1 deny 239.0.0.0 0.255.255.255
access-list 1 permit 224.0.0.0 15.255.255.255

```

Refer to Guide to Auto-RP Configuration and Diagnostics for more information on Auto-RP.

## DVMRP

Your Internet service provider (ISP) may suggest that you create a Distance Vector Multicast Routing Protocol (DVMRP) tunnel to the ISP to gain access to the multicast backbone in the Internet (mbone). The minimum commands to configure a DVMRP tunnel are shown below:

```

interface tunnel0
ip unnumbered <any pim interface>
tunnel source <address of source>
tunnel destination <address of ISPs mrouterd box>
tunnel mode dvmrp
ip pim sparse-dense-mode

```

Typically, the ISP has you tunnel to a UNIX machine running "mrouterd" (DVMRP). If the ISP has you tunnel to another Cisco device instead, use the default GRE tunnel mode.

If instead of receiving multicast packets, you want to generate multicast packets for others on the mbone to see, you need to advertise the source subnets. If your multicast source host address is 131.108.1.1, you need to advertise the existence of that subnet to the mbone. Directly-connected networks are advertised with metric 1 by default. If your source is not directly connected to the router with the DVMRP tunnel, configure the following under interface tunnel0:

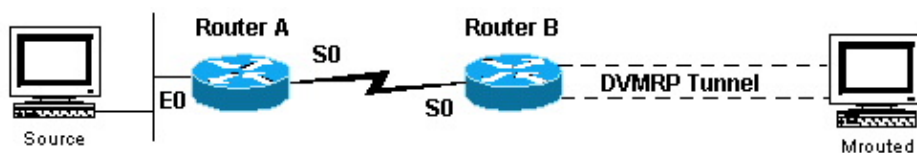
```

ip dvmrp metric 1 list 3
access-list 3 permit 131.108.1.0 0.0.0.255

```

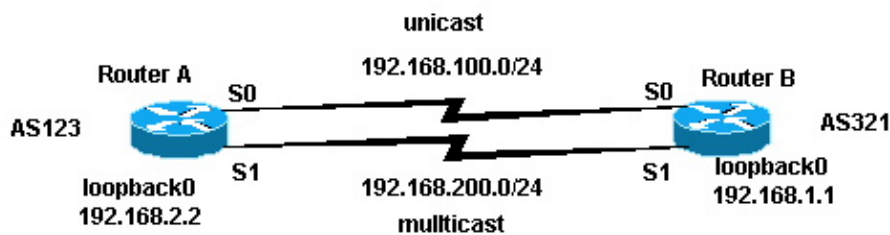
**Note:** You must include an access list with the above command to prevent advertising the entire Unicast routing table to the mbone.

If your setup is similar to the one shown below, and you want to propagate DVMRP routes through the domain, configure the **ip dvmrp unicast-routing** command on the serial0 interfaces of Routers A and B. This action provides the forwarding of DVMRP routes to PIM neighbors who then have a DVMRP routing table used for Reverse Path Forwarding (RPF). DVMRP learned routes take RPF precedence over all other protocols, except for directly-connected routes.



# MBGP

Multiprotocol Border Gateway Protocol (MBGP) is a basic method to carry two sets of routes: one set for unicast routing and one set for multicast routing. MBGP provides the control necessary to decide where multicast packets are allowed to flow. PIM uses the routes associated with multicast routing to build data distribution trees. MBGP provides the RPF path, not the creation of multicast state. PIM is still needed to forward the multicast packets.



## Router A Configuration

```
ip multicast-routing

interface loopback0
ip pim sparse-dense-mode
ip address 192.168.2.2 255.255.255.0

interface serial0
ip address 192.168.100.1 255.255.255.0

interface serial1
ip pim sparse-dense-mode
ip address 192.168.200.1 255.255.255.0

router bgp 123
network 192.168.100.0 nlri unicast
network 192.168.200.0 nlri multicast
neighbor 192.168.1.1 remote-as 321 nlri unicast multicast
neighbor 192.168.1.1 ebgp-multihop 255
neighbor 192.168.100.2 update-source loopback0
neighbor 192.168.1.1 route-map setNH out

route-map setNH permit 10
match nlri multicast
set ip next-hop 192.168.200.1

route-map setNH permit 20
```

## Router B Configuration

```
ip multicast-routing

interface loopback0
ip pim sparse-dense-mode
ip address 192.168.1.1 255.255.255.0
```

```

interface serial0
ip address 192.168.100.2 255.255.255.0

interface serial1
ip pim sparse-dense-mode
ip address 192.168.200.2 255.255.255.0

router bgp 321
network 192.168.100.0 nlri unicast
network 192.168.200.0 nlri multicast
neighbor 192.168.2.2 remote-as 123 nlri unicast multicast
neighbor 192.168.2.2 ebgp-multihop 255
neighbor 192.168.100.1 update-source loopback0
neighbor 192.168.2.2 route-map setNH out

route-map setNH permit 10
match nlri multicast
set ip next-hop 192.168.200.2

route-map set NH permit 20

```

If your unicast and multicast topologies are congruent (for example, they are going over the same link), the primary difference in the configuration is with the **nlri unicast multicast** command. An example is shown below:

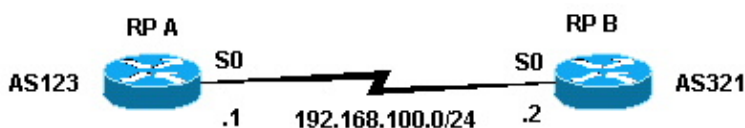
```
network 192.168.100.0 nlri unicast multicast
```

Congruent topologies with MBGP has a benefit even though the traffic traverses the same paths, different policies can be applied to unicast BGP versus multicast BGP.

Refer to [What is MBGP?](#) for more information about MBGP.

## MSDP

Multicast Source Discovery Protocol (MSDP) connects multiple PIM-SM domains. Each PIM-SM domain uses its own independent RP(s) and does not have to depend on RPs in other domains. MSDP allows domains to discover multicast sources from other domains. If you are also BGP-peering with the MSDP peer, you should use the same IP address for MSDP as for BGP. When MSDP does peer RPF checks, MSDP expects the MSDP peer address to be the same address that BGP/MBGP gives it when it performs a route table lookup on the RP in the SA message. However, you are not required to run BGP/MBGP with the MSDP peer if there is a BGP/MBGP path between the MSDP peers. If there is no BGP/MBGP path and more than one MSDP peer, you must use the **ip msdp default-peer** command. The example below shows that RP A is the RP for its domain and RP B is the RP for its domain.



Router A Configuration

```

ip multicast-routing

ip pim send-RP-announce loopback0 scope 16
ip pim send-RP-discovery scope 16

ip msdp peer 192.168.100.2
ip msdp sa-request 192.168.100.2

interface loopback0
ip address <address> <mask>
ip pim sparse-dense-mode

interface serial0
ip address 192.168.100.1 255.255.255.0
ip pim sparse-dense-mode

```

### Router B Configuration

```

ip multicast-routing

ip pim send-RP-announce loopback0 scope 16
ip pim send-RP-discovery scope 16

ip msdp peer 192.168.100.1
ip msdp sa-request 192.168.100.1

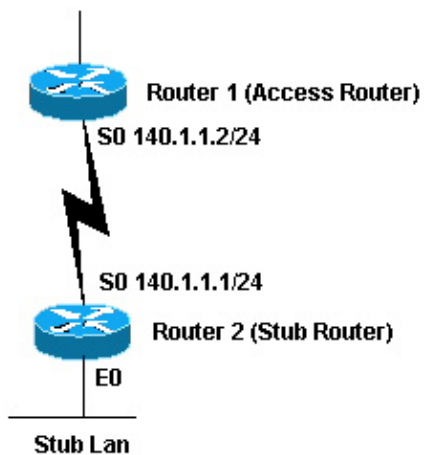
interface loopback0
ip address <address> <mask>
ip pim sparse-dense-mode

interface serial0
ip address 192.168.100.2 255.255.255.0
ip pim sparse-dense-mode

```

## Stub Multicast Routing

Stub multicast routing allows you to configure remote/stub routers as IGMP proxy agents. Instead of fully participating in PIM, these stub routers forward IGMP messages from the host(s) to the upstream multicast router.



### Router 1 Configuration

```
int s0
ip pim sparse-dense-mode
ip pim neighbor-filter 1

access-list 1 deny 140.1.1.1
```

The **ip pim neighbor-filter** command is needed so that Router 1 does not recognize Router 2 as a PIM neighbor. If you configure Router 1 in sparse mode, the neighbor filter is unnecessary. Router 2 must not run in sparse mode. When in dense mode, the stub multicast sources can flood to the backbone routers.

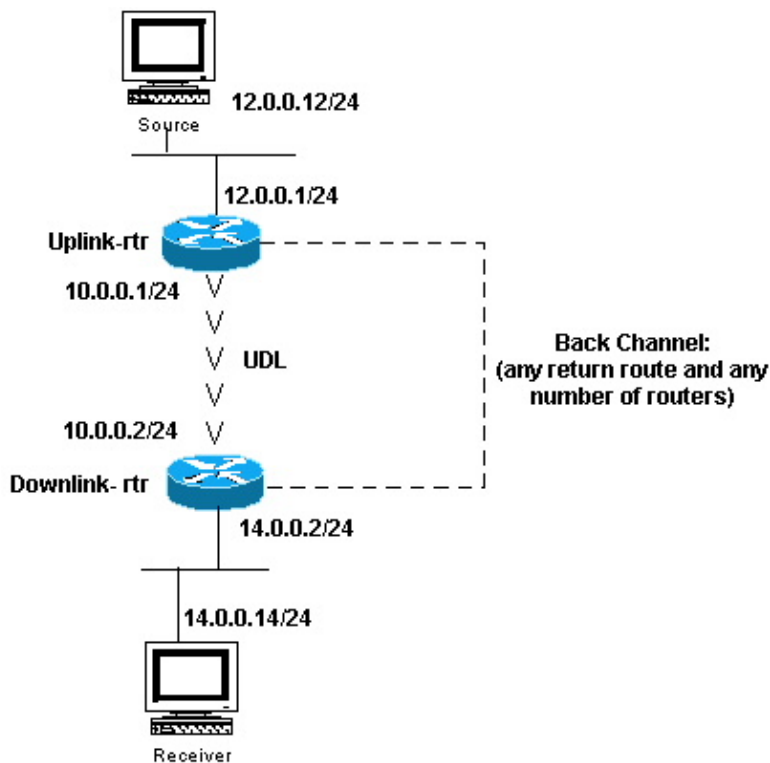
### Router 2 Configuration

```
ip multicast-routing
int e0
ip pim sparse-dense-mode
ip igmp helper-address 140.1.1.2

int s0
ip pim sparse-dense-mode
```

## IGMP UDLR for Satellite Links

Unidirectional Link Routing (UDLR) provides a method for forwarding multicast packets over a unidirectional satellite link to stub networks that have a back channel. This is similar to stub multicast routing. Without this feature, the uplink router is not able to dynamically learn which IP multicast group addresses to forward over the unidirectional link, because the downlink router cannot send anything back.



### Uplink-rtr Configuration

```
ip multicast-routing

interface Ethernet0
description Typical IP multicast enabled interface
ip address 12.0.0.1 255.0.0.0
ip pim sparse-dense-mode

interface Ethernet1
description Back channel which has connectivity to downlink-rtr
ip address 11.0.0.1 255.0.0.0
ip pim sparse-dense-mode

interface Serial0
description Unidirectional to downlink-rtr
ip address 10.0.0.1 255.0.0.0
ip pim sparse-dense-mode
ip igmp unidirectional-link
no keepalive
```

### Downlink-rtr Configuration

```
ip multicast-routing

interface Ethernet0
description Typical IP multicast enabled interface
ip address 14.0.0.2 255.0.0.0
ip pim sparse-dense-mode
ip igmp helper-address udl serial0

interface Ethernet1
description Back channel which has connectivity to downlink-rtr
ip address 13.0.0.2 255.0.0.0
ip pim sparse-dense-mode

interface Serial0
description Unidirectional to uplink-rtr
ip address 10.0.0.2 255.0.0.0
ip pim sparse-dense-mode
ip igmp unidirectional-link
no keepalive
```

## PIMv2 BSR

If all routers in the network are running PIMv2, you can configure a BSR instead of Auto-RP. BSR and Auto-RP are very similar. A BSR configuration requires that you configure BSR candidates (similar to RP-Announce in Auto-RP) and BSRs (similar to Auto-RP Mapping Agents). To configure a BSR, follow these steps:

1. On the candidate BSRs configure:

```
ip pim bsr-candidate interface hash-mask-len pref
```

Where *interface* contains the candidate BSRs IP address. It is recommended (but not required) that *hash-mask-Len* be identical across all candidate BSRs. A candidate BSR with the largest *pref* value will be elected as the BSR for this domain.

An example of command usage is shown below:

```
ip pim bsr-candidate ethernet0 30 4
```

The PIMv2 BSR collects candidate RP information and to disseminate RP-set information associated with each group prefix. To avoid single point of failure, you can configure more than one router in a domain as candidate BSRs.

A BSR is elected among the candidate BSRs automatically, based on the preference values configured. To serve as candidate BSRs, the routers should be connected and be in the backbone of the network, instead of in the dialup area of the network.

2. Configure candidate RP routers. The following example shows a candidate RP, on the interface ethernet0, for the entire admin-scope address range:

```
access-list 11 permit 239.0.0.0 0.255.255.255  
ip pim rp-candidate ethernet0 group-list 11
```

## CGMP

To configure Group Management Protocol (CGMP), configure the following on the router interface facing the switch:

```
ip pim sparse-dense-mode  
ip cgmp
```

Then, configure the following on the switch:

```
set cgmp enable
```

## IGMP Snooping

Internet Group Management Protocol (IGMP) snooping is available with release 4.1 of the Catalyst 5000. IGMP snooping requires a Supervisor III card. No configuration other than PIM is necessary to configure IGMP snooping on the router. A router is still necessary with IGMP snooping to provide the IGMP querying.

The example below shows how to enable IGMP snooping on the switch:

```
Console> (enable) set igmp enable  
IGMP Snooping is enabled.  
CGMP is disabled.
```

If you try to enable IGMP, but CGMP is already enabled, you see the following:

```
Console> (enable) set igmp enable  
Disable CGMP to enable IGMP Snooping feature.
```

# PGM

Pragmatic General Multicast (PGM) is a reliable multicast transport protocol for applications that require ordered, duplicate-free, multicast data delivery from multiple sources to multiple receivers. PGM guarantees that a receiver in the group either receives all data packets from transmissions and retransmissions or can detect unrecoverable data packet loss.

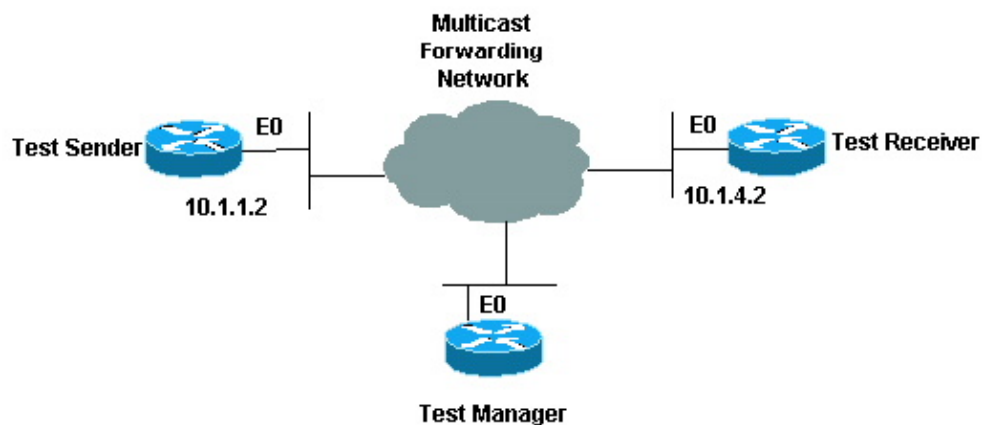
There are no PGM global commands. PGM is configured per interface using the **ip pgm** command. You must enable Multicast routing on the router with PIM on the interface.

# MRM

Multicast Routing Monitor (MRM) facilitates automated fault detection in a large multicast routing infrastructure. MRM is designed to alert a network administrator of multicast routing problems near to real-time.

MRM has two components: MRM tester and MRM manager. MRM tester is a sender and/or receiver.

MRM is available in Cisco IOS Software Release 12.0(5)T and later. Only the MRM testers and managers need to be running the MRM-supported Cisco IOS version.



## Test Sender Configuration

```
interface Ethernet0
ip mrm test-sender
```

## Test Receiver Configuration

```
interface Ethernet0
ip mrm test-receiver
```

## Test Manager Configuration

```
ip mrm manager test1
manager e0 group 239.1.1.1
senders 1
receivers 2 sender-list 1
```

```
access-list 1 permit 10.1.1.2
access-list 2 permit 10.1.4.2
```

Output from the **show ip mrm manager** command on Test Manager is shown below:

```
Test_Manager# show ip mrm manager
Manager:test1/10.1.2.2 is not running
Beacon interval/holdtime/ttl:60/86400/32
Group:239.1.1.1, UDP port test-packet/status-report:16384/65535
Test sender:
 10.1.1.2
Test receiver:
 10.1.4.2
```

Start the test using the command shown below. The test manager sends control messages to the test sender and the test receiver as configured in the test parameters. The test receiver joins the group and monitors test packets sent from the test sender.

```
Test_Manager# mrm start test1
*Feb  4 10:29:51.798: IP MRM test test1 starts .....
Test_Manager#
```

To display a status report for the test manager, enter the following command:

```
Test_Manager# show ip mrm status

IP MRM status report cache:
Timestamp      Manager      Test Receiver  Pkt Loss/Dup (%)   Ehsr
*Feb  4 14:12:46 10.1.2.2     10.1.4.2       1                   (4%)                29
*Feb  4 18:29:54 10.1.2.2     10.1.4.2       1                   (4%)                15
Test_Manager#
```

The output shows that the receiver sent two status reports (one line each) at a given time stamp. Each report contains one packet loss during the interval window (default of one second). The "Ehsr" value shows the estimated next sequence number value from the test sender. If the test receiver sees duplicate packets, it shows a negative number in the "Pkt Loss/Dup" column.

To stop the test, enter the following command:

```
Test_Manager# mrm stop test1
*Feb  4 10:30:12.018: IP MRM test test1 stops
Test_Manager#
```

While running the test, the MRM sender starts sending RTP packets to the configured group address at the default interval of 200 ms. The receiver monitors (expects) the same packets at the same default interval. If the receiver detects a packet loss in the default window interval of five seconds, it sends a report to the MRM manager. You can display the status report from the receiver by using the **show ip mrm status** command on the manager.

## Troubleshooting

Some of the most common problems found while implementing IP multicast in a network are when the router is not forwarding multicast traffic because of either a RPF failure or TTL settings. Refer to the IP Multicast Troubleshooting Guide for a detailed discussion about these and other common problems, symptoms, and resolutions.

---

## Related Information

- [IP Multicast Troubleshooting Guide](#)
  - [Basic Multicast Troubleshooting Tools](#)
  - [TCP/IP Multicast Support Page](#)
  - [Technical Support – Cisco Systems](#)
- 

All contents are Copyright © 1992–2004 Cisco Systems, Inc. All rights reserved. Important Notices and Privacy Statement.