

Procedures to Configure NT RAS for Remote Access Using Windows 9x client and Dial-Up Networking

NT Server:

Open Remote Access Admin.

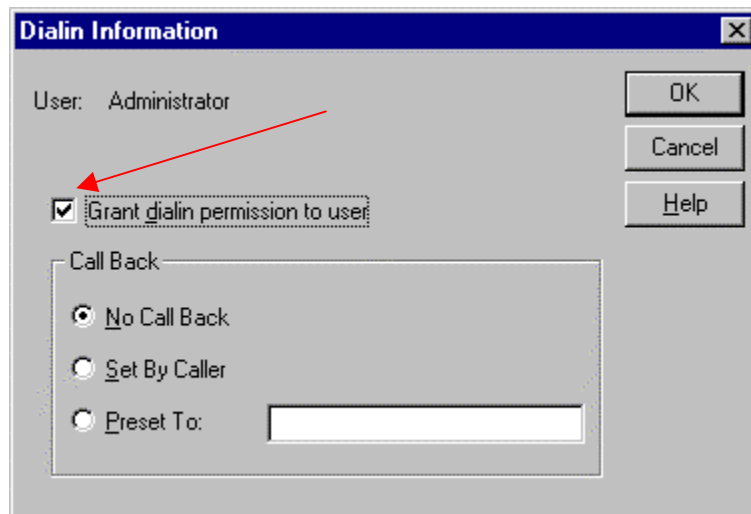
1-Click the '**Start**' button and select '**Programs**'.

2-Select '**Administrative Tools (Common)**'.

3-Select '**Remote Access Admin**'.

Select '**Users**', and select '**Permissions...**'.

Check the '**Grant dialin permission to user**' check box for the appropriate user.



Windows 95 Client (you should have the Windows 9x CD ROM)

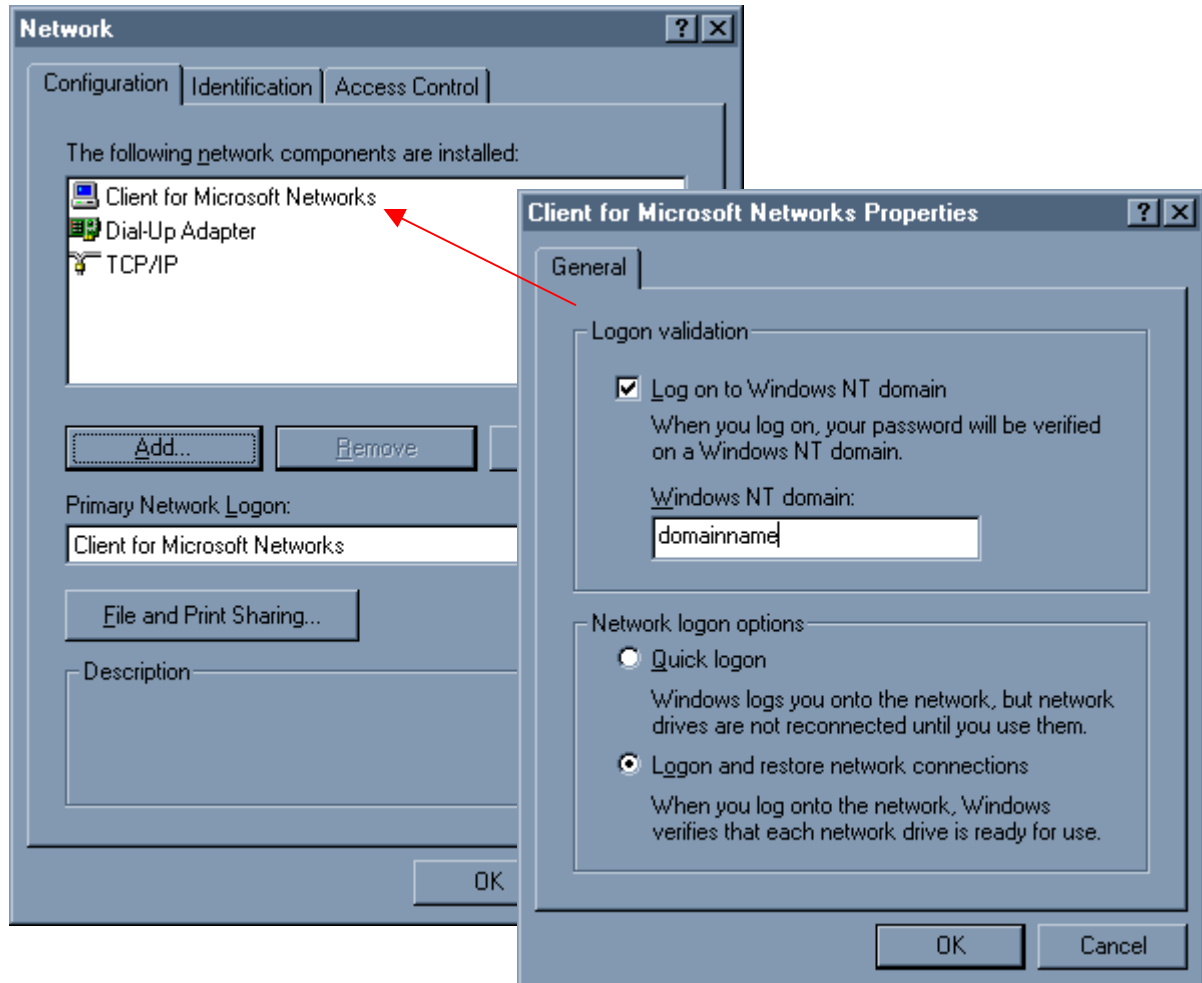
Install the Windows 9x TCP/IP Protocol - if not already installed

Display the **Network** dialog box by double-clicking the network icon inside the control panel. Click **Add**. (If the Windows 9x TCP/IP protocol is already installed, you can go to "Setup Dial-Up Networking") Click **Protocol**, and then click **Add**. Click **Microsoft**, and then click **TCP/IP**. Click **OK**. Click **Dial-Up Adapter**, and then click **Properties**. Make sure the **TCP/IP** check box is selected.

If prompted, restart your computer.

Notes

- You can open the **Network** dialog box by clicking **Start**, pointing to **Settings**, clicking **Control Panel**, and then double-clicking **Network**.
- When you install TCP/IP, it is bound to all of your adapters by default. If you have a network card and don't use TCP/IP with it, in the **Network** dialog box, select the network card, click **Properties**, click the **Bindings** tab, and then click to clear the **TCP/IP** check box.

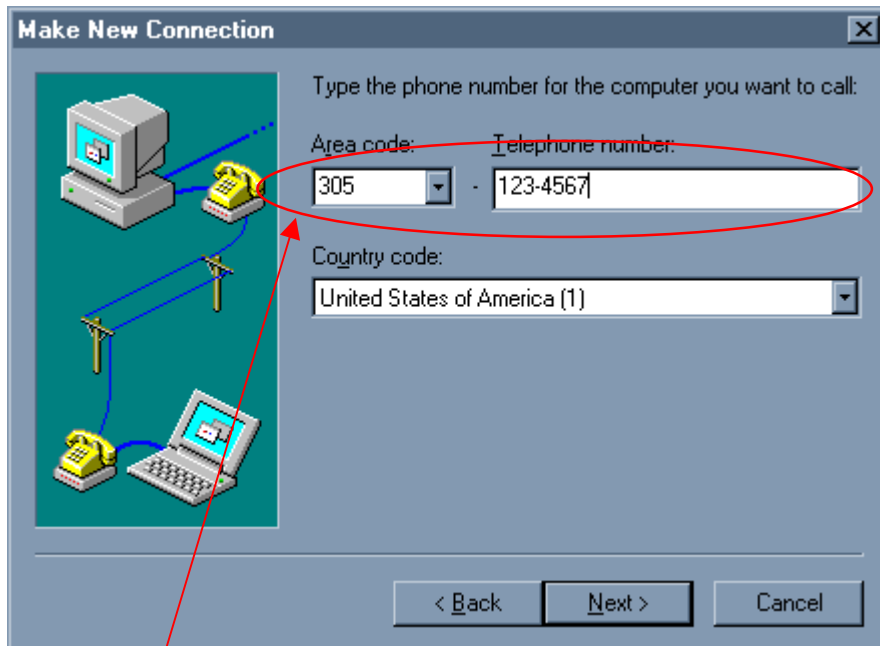
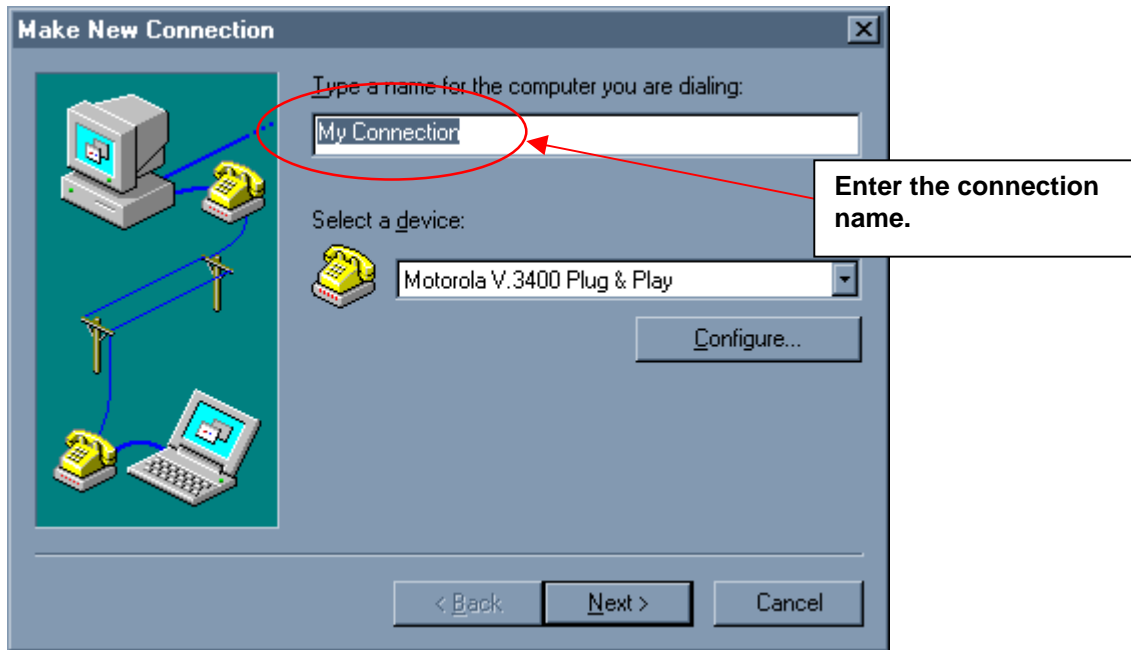


Setup Dial-Up Networking

From a Windows 95 workstation, Double-click the "**My Computer**" icon.

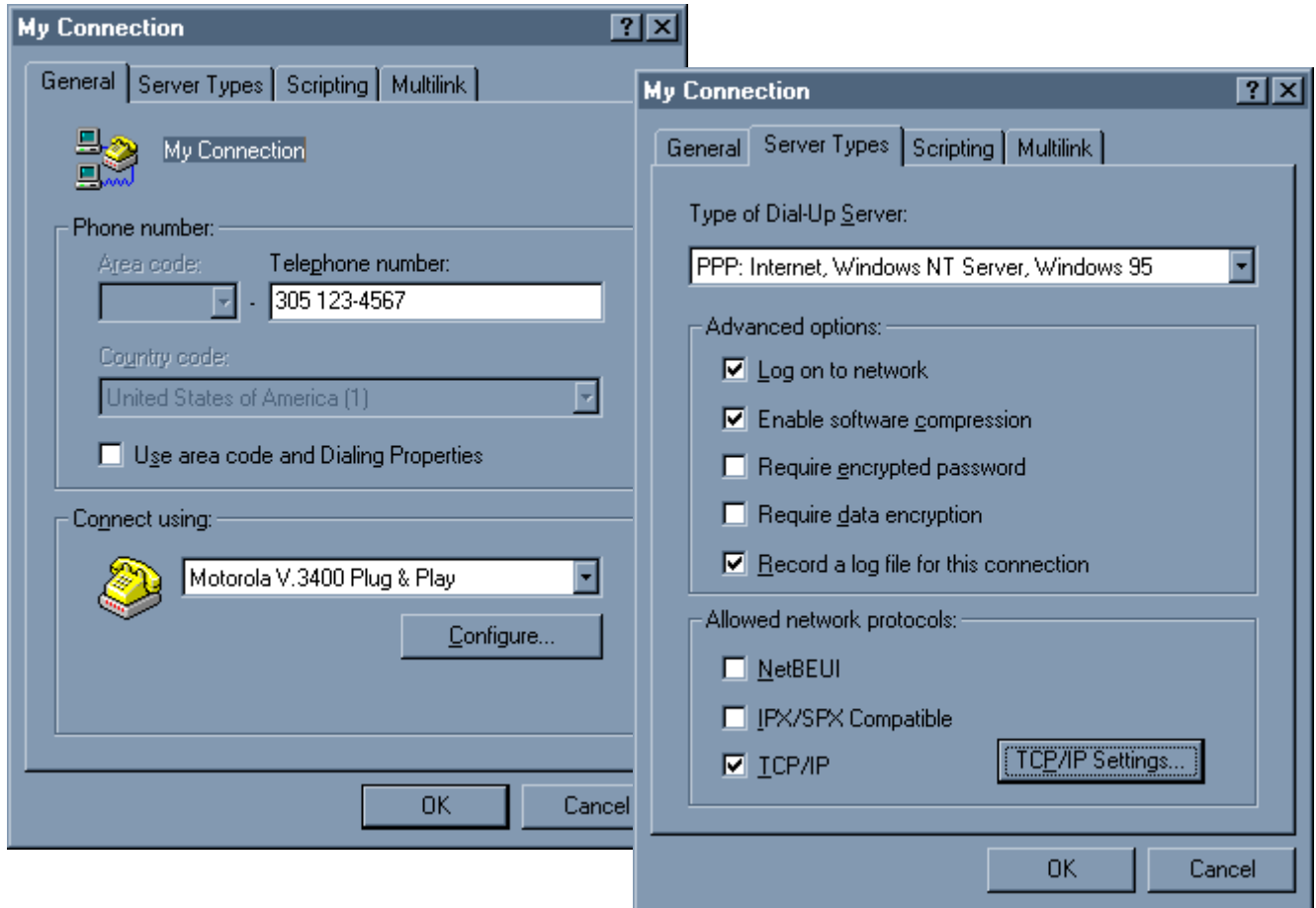
NOTE: The 'My Computer' icon can be found on the desktop..

Double-click the 'Dial-up Networking' icon. Next, select "**Make a New Connection**"



Enter the phone number of the NT RAS server. Press the **Next** button.

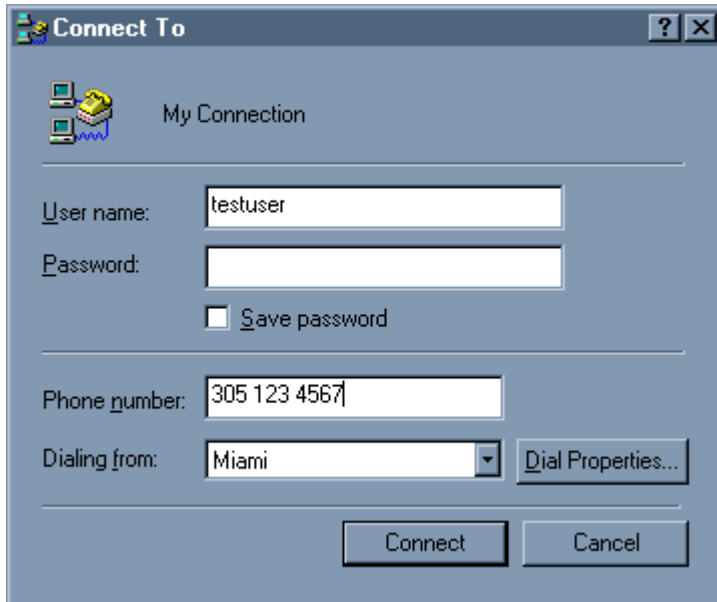
After the connection definition is completed - go back to the Dialup networking group and highlight the just completed connection - then, press the right mouse key so that you can change the connection **properties**.



The only allowed network protocol selected should be TCP/IP. Also, don't change any of the TCP/IP settings - since the NT RAS server will assign the client an IP address automatically, by default.

A DHCP SCOPE is a set of IP addresses dynamically assigned by a DHCP server to a group of computers running the DHCP Client service. Each scope includes a unique subnet mask, a scope name assigned by an administrator, and lease duration values assigned to DHCP clients with dynamic IP addresses.

To start a RAS dialup session, **double click** on the newly created connection.



To edit the connection at a later time, select the icon from the 'Dial-Up Networking' window, select 'File', and select 'Properties'.